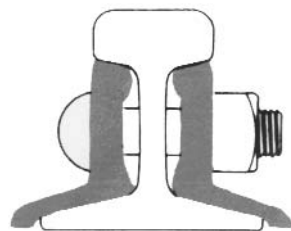


# Joint Bars

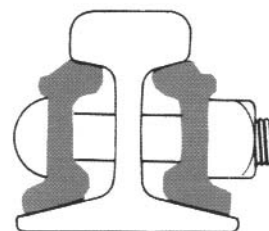
Unitrac carries in stock new and relay joint bars to fit rail sections. These are usually ordered by the pair.

To order bars please specify:

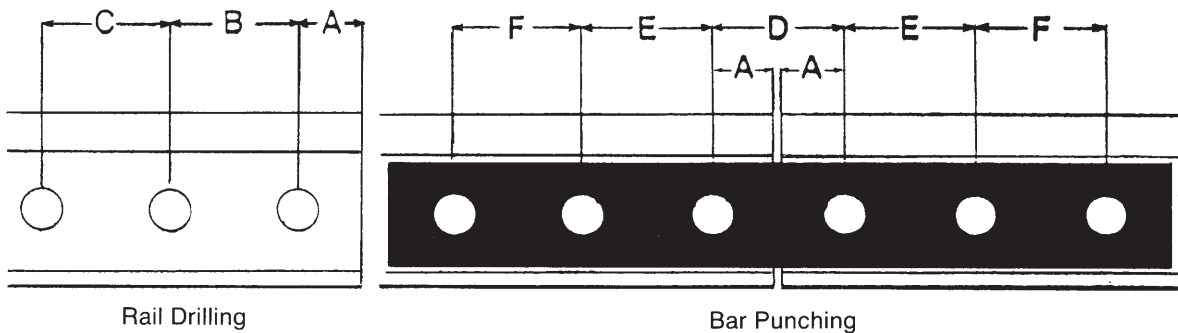
- 1) Type required (angle or joint)
- 2) Section of rail to attach
- 3) New or relay
- 4) 4 or 6 hole
- 5) Hole spacing



**ANGLE BARS**



**JOINT BARS**



Standard	140 AREA to 115 AREA	100 AREA and 100 ARA-A	90 ARA-A	85 ASCE to 40 ASCE
Rail Drillings				
A	3½"	2 <sup>11</sup> / <sub>16</sub> "	Various	2½"
B	6"	5½"		5"
C*	6"	5½"		—
Bar Punchings				
D	7 <sup>1</sup> / <sub>8</sub> "	5½"	Various	5 <sup>1</sup> / <sub>8</sub> "
E	6"	5½"		5"
F*	6"	5½"		—

\*These dimensions to be omitted for 4-hole bars  
Specify rail weight, section, drilling, and bolt size

