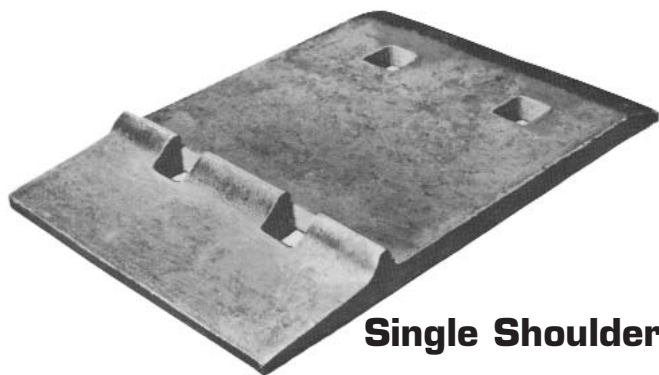
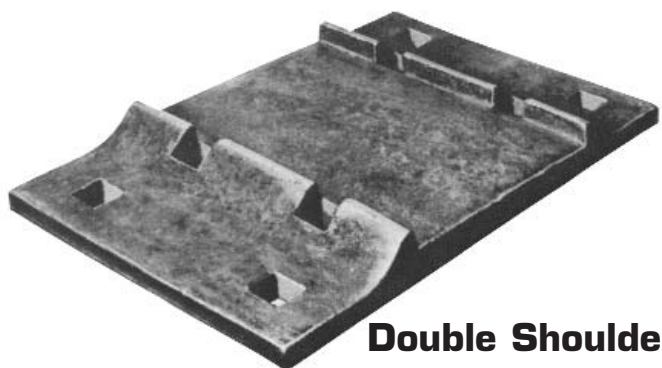


Tie Plates



Single Shoulder



Double Shoulder

The use of single or double shoulder tie plates makes a more stable track and greatly lengthens the life of wood ties. Punched and sheared from hot-rolled steel sections, tie plates provide proper cant, uniform bearing surface for the rail and better load distribution to the ties. They hold the rail to gauge, providing more uniform wear to rail head and protect against undue wear to ties. Tie plates are designed with a long end or field end to be located outside of the rails. In the case of single shoulder tie plates, the shoulder is placed on the field end of the plate. The gauge end or short end of the plate is located inside of the rails. When ordering, identification of the rail section or the width of the rail base should be specified. Quality relaying tie plates are also available from our stocks which offer appreciable savings on railroad trackage and industrial sidings.

TIE PLATES

AREA PLAN #	PUNCH	DESCRIPTION	RAIL BASE SIZE
PLAN 3 16.69#	A & B	7 ³ / ₄ " x 12"	5 ³ / ₈ "
PLAN 4 14.09#	B	7 ³ / ₄ " x 11"	5 ¹ / ₂ "
PLAN 5 17.13#	A & B	7 ³ / ₄ " x 12"	5 ¹ / ₂ "
PLAN 7 20.56#	A & B	7 ³ / ₄ " x 13"	5 ¹ / ₂ "
PLAN 8 23.93#	A	7 ³ / ₄ " x 14"	5 ¹ / ₂ "
PLAN 10 18.76#	A & B	7 ³ / ₄ " x 13"	6"
PLAN 12 22.45#	A & B	7 ³ / ₄ " x 14"	6"
PLAN 13 24.32#	A	7 ³ / ₄ " x 14 ³ / ₄ "	6"

