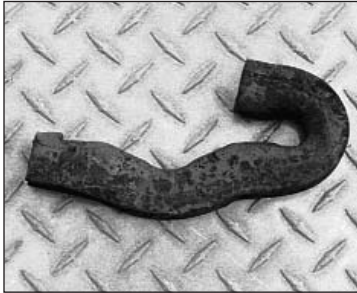


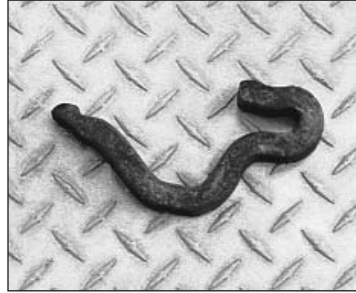
Track Accessories

Rail Anchors

Unitrac furnishes new and relay rail anchors of all sizes. When ordering snap on type, tool is required for installation.



Channel Lock Drive



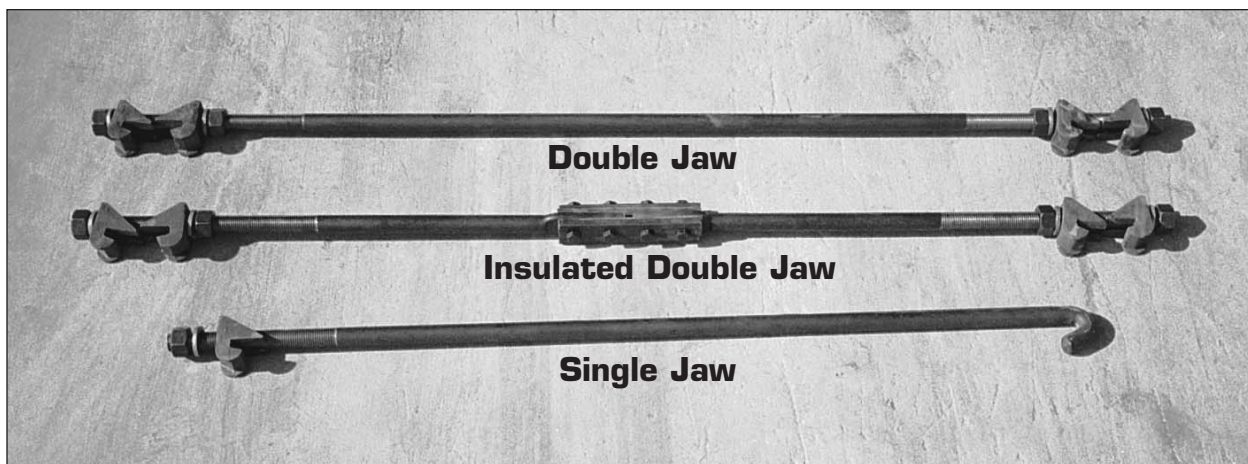
Unit Drive on

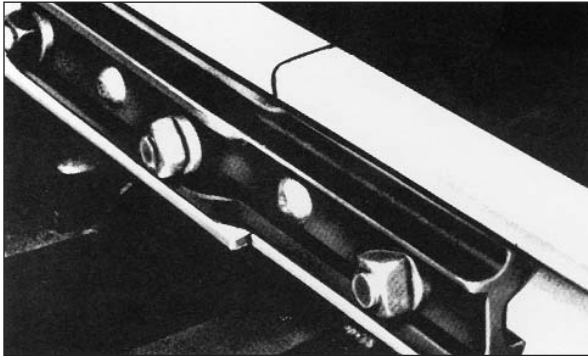


Unit Snap on

Gage Rods

All Gage Rods are made of round high-tensile threading stock, 1 1/4" in diameter, for all track gages and all sections of rail. Gage rods prevent spreading of rails, reduce track maintenance costs and prevent derailments. Lockwashers are supplied only when specified.



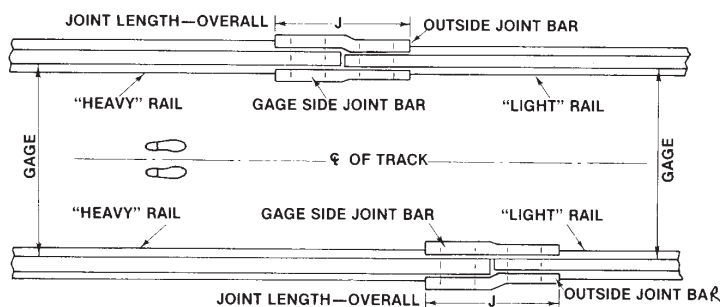


Compromise Joint Bars

Designed to join rail sections of different sizes while keeping gage and running surfaces in alignment. Compromise joints consist of two bars - an "outside joint bar" and a "gage side joint bar". Generally speaking, unless the difference between the rail head width is less than $\frac{3}{16}$ ", right and left-hand joints are required. Unless otherwise specified:

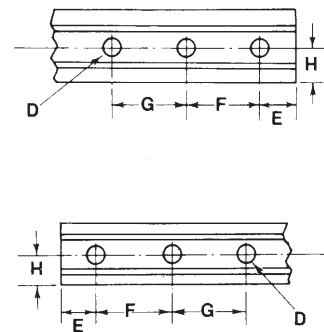
- 1) bolt holes are alternately round and oval,
- 2) bolts are not provided, and
- 3) rail joint opening is $\frac{1}{8}$ ".

To Determine Right-Hand or Left-Hand Joint



Stand between "HEAVY" rails, facing direction of the "LIGHT" rails. Indicate the joint to the right as "RIGHT HAND" joint, and the joint to the left as the "LEFT HAND" joint.

To Determine Bolt Hole Locations



Switch Point Protectors

The reversible manganese steel switch point protector increases the life of your switch point. When bolted to the inside of the straight main rail, the protector momentarily deflects the wheel flange so it misses the tip of the switch point. It is furnished complete with steel face plate, shim, track bolts, nuts and spring washers.

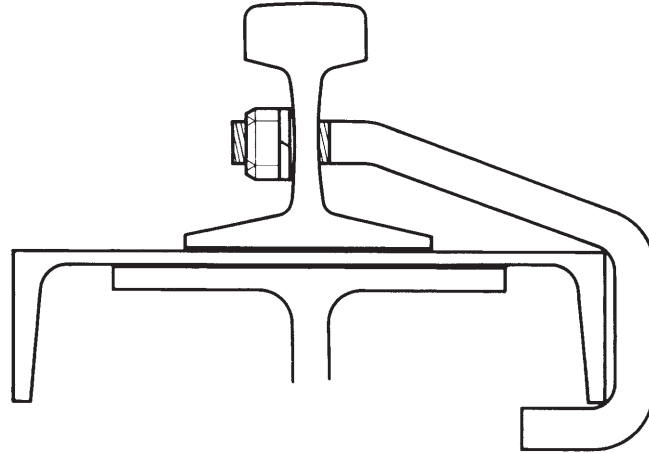
To order, specify rail size and section.



Track Accessories

Hook Bolts

Hook bolts are very commonly used to attach lighter rails (usually up to 85 lbs.) to channels (as shown at left) or directly onto a crane rail beam. They are usually threaded to allow up to 1/2" lateral adjustment in either direction, and come complete with hex nuts and lockwashers. When ordering, specify rail section, bolt diameter, and the size and weight of supporting beam or channel.



Flangeway Road Crossing Guards

Rigid steel bars protect concrete or asphalt paving, provide smooth road crossings level with top of rails. Specially designed steel castings fit into web of rail and around rail base and position flangeway guards to maintain correct space between pavement and rail head. Specify section and weight of rail and width of crossing.

