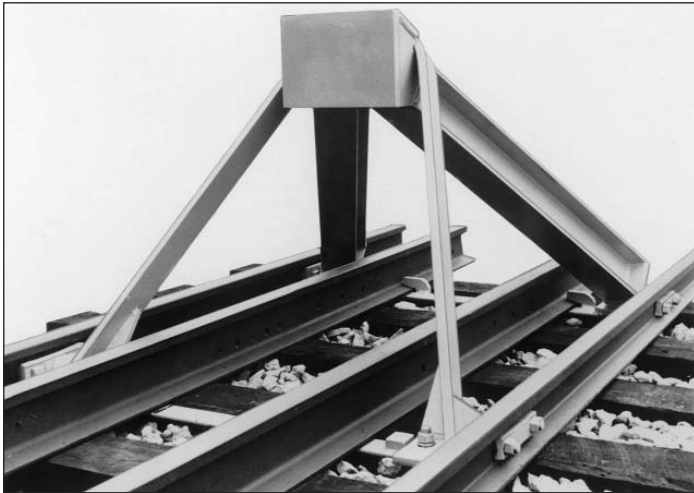


Bumping Post

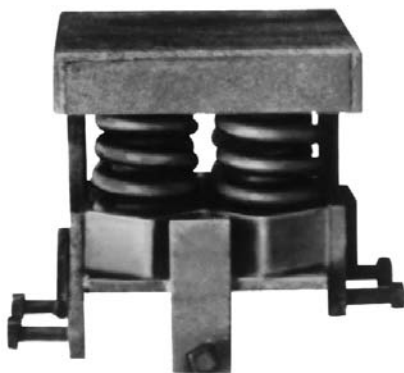


Bumping Posts

All-steel, extra heavy-duty post featuring two triangular welded units which carry the shock of impact to ties without distorting the bumping post or the track. Design incorporates the use of middle rails to form a solid foundation and to strengthen the track. This post is recommended for all rail sections from 85-lb. through 140-lb—is furnished complete with double strength, chrome nickel, heat-treated bolts.

All Bumping Posts are made in one size that will fit any rail from 5 to 7½ inches high (except WA which fits any rail from 5¾ to 8 inches high) for rail smaller than 5 inches or larger than 7½ inches, please give height of rail on which post will be installed.

TYPES	APPLICATION	WEIGHT LBS.
WK	Strongest Post in its price class.	705
WD	General Service. Long industrial tracks outside of buildings, flat switching yards, no descending grades or hazards at track end. Installation - strengthening middlerails may be used with this Post.	800
WG	For Extra Heavy Duty. Active track where frequent striking face contact demands greater car stopping ability.	1,250
WA	Strongest and heaviest Post available.	1,655
SHOCK FREE HEADS	Available for mounts on bumping posts or flat vertical surface.	



Shock-Free Heads

Spring-cushioned heads that help prevent damage to cars, lading, bumping post and track foundation, have been proved in service for many years. They are easily installed by simply slipping over head of post and bolting in. Special head design absorbs severe shock of coupler hitting bumping post and does not require resetting. Standard model weight 435 lbs. and is available from stock to fit all post designs.

Shock-free heads can also be mounted on flat vertical surfaces. Order Attaching Fixture, 16"x18", ¾" hot rolled steel, 145 pounds. Extension with head mounted - 18¾".

