

# Turnouts

A turnout is an arrangement of a switch, a frog and closure rails, which diverts rolling stock from one track to another.

Because industrial trackwork often handles lighter loads at slower speeds than mainline railroads, industrial turnouts are constructed with lighter materials and components.

The diagram below illustrates the major components of a turnout.

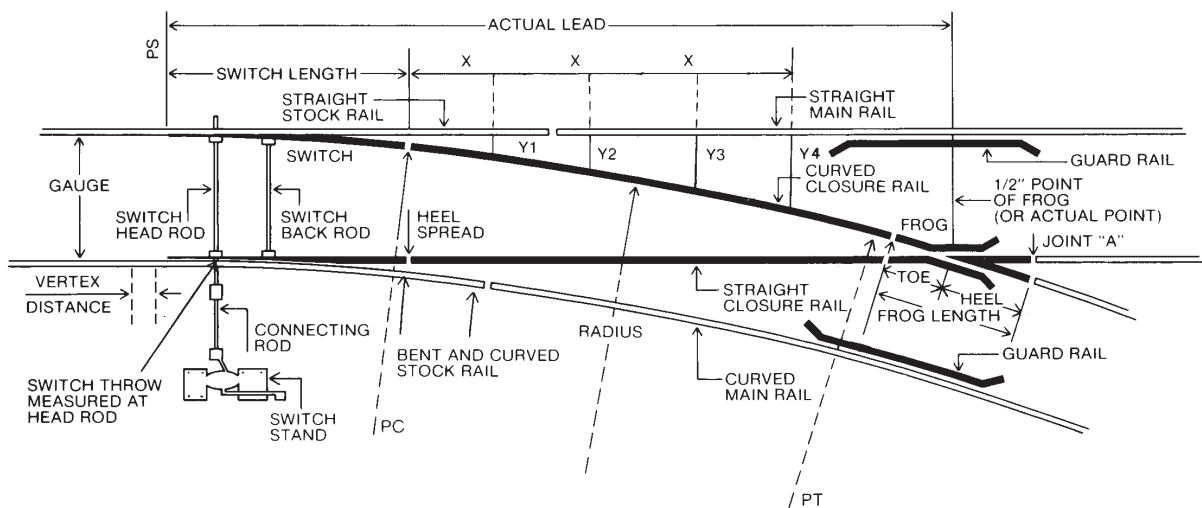


Figure 1

## **FROG**

*Frog Assembly Plates*

## **GUARD RAILS**

*Guard Rails Plates  
(when required)*

## **SWITCH STAND**

*Switch Stand Assembly  
Connecting Rod  
Target Assembly  
(when required)*

## **TURNOUT ACCESSORIES**

*Standard Tie Plates  
Rail Anchors  
Joints*

*Above furnished  
upon request*

## **SWITCH**

*Switch Points with  
Clips and Stops  
Switch Rods  
Braces and Brace Plates  
Gauge Plates  
Slide Plates  
Heel Plates  
Hook-Twin Tie Plates  
Heel Block Assemblies*

## **Note:**

*Stock, Closure and  
Turnout Rails can be  
supplied upon request*

