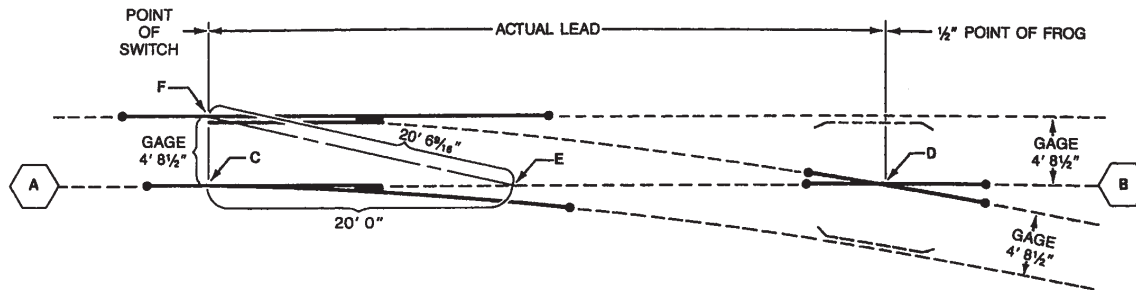


Turnout Installation

STRAIGHT GAUGE LINE METHOD NOMINAL 56 1/2



1. Place turnout material in its approximate location.
2. Establish a string line over the straight switch point through the frog - Point A to Point B. This establishes the gauge line of the straight side of the turnout.
3. Place material under the gauge line (string line A-B).
4. Select or locate the Point of Switch, C.
5. Set the straight switch point and the curved stock rail in place.
6. Measure the lead distance and set the 1/2" point frog, D.
7. Square up the other switch point and stock rail assembly as shown in diagram (Points C, E & F). Note: dimensions will vary with change in gauge.
8. Fill in closure, turnout, and guard rails as required.
9. Assemble joints, but do not tighten.
10. Recheck alignment and square for visual appearance.
Are straight lines straight?
Are curves smooth?
11. Spike every 4th and 5th tie to decrease movement prior to tightening the joints.
12. Now you are ready for final assembly. Tighten the joints and spike the balance of the turnout.

