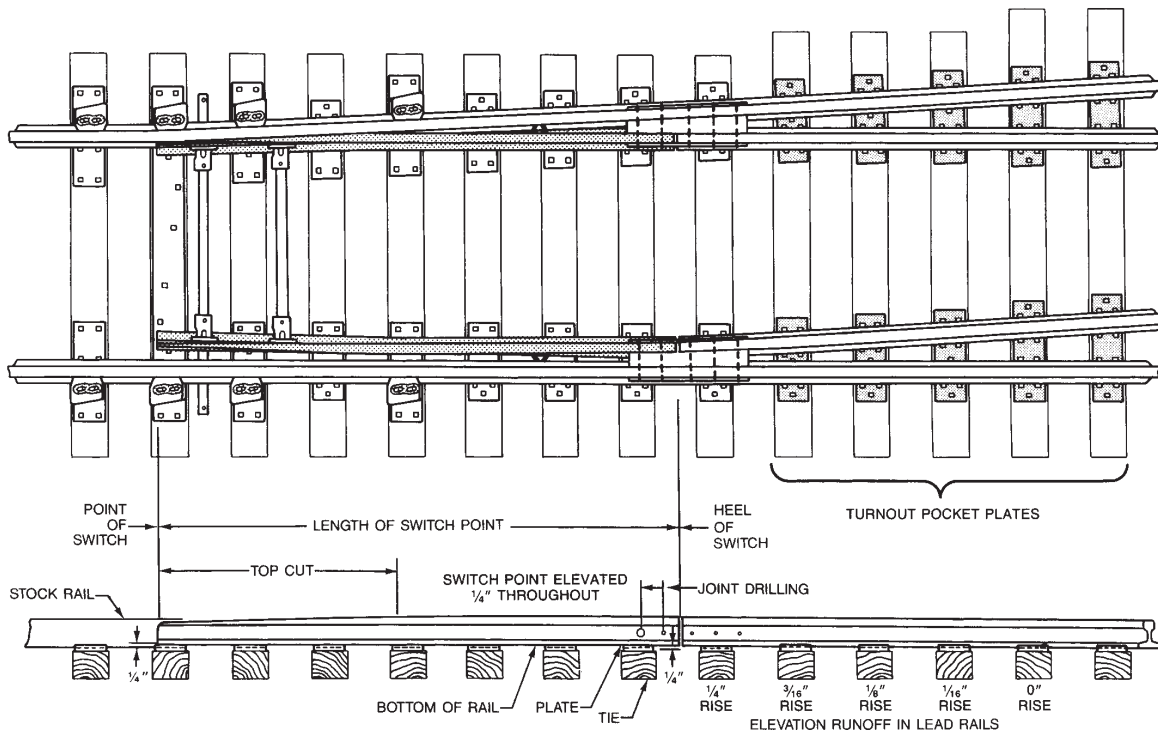


Split Switch with Uniform Risers

The switch rails have a uniform elevation for the entire length of the switch (up 1/4"). Turnout plates have decreasing risers to slope the closure rails back down to the same elevation as the stock rails.

PLAN VIEW OF SWITCH AND PLATE LAYOUT WITH UNIFORM RISERS



ELEVATION OF SWITCH TO SHOW UNIFORM RISERS
 FOR DETAILS OF SWITCH POINT, REFER TO AREA PLAN FOR SWITCH LENGTH REQUIRED.
 (See below for AREA Split-Switch listings.)

Unitrac produces switches to the following AREA plans:

111 16'-6" Straight Split Switch with Uniform Risers.

113 11'-0" Straight Split Switch with Uniform Risers.

