

Hook Twin Tie Plates for Frogs

TYPICAL APPLICATIONS OF HOOK-TWIN TIE PLATES. Refer to AREA frog plans for required quantities of plates.

Frog design, frog size and type of connecting rails will determine the quantity of hook-twin tie plates required. Connecting rail types are listed at right.

TYPE I Rail - Rails having base up to 5 3/16" and head 2 9/16" inclusive

TYPE II Rail - Rails having base up to 5 1/2" and head 2 3/4" inclusive

TYPE III Rail - Rails having base up to 6" and head 3" inclusive

*Formerly 641-55

QUANTITIES OF BOLTED RIGID FROG HOOK TWIN TIE PLATES

FROG NO.	TYPE I RAILS					TYPE II RAILS					TYPE III RAILS				
	L-23	L-27	LR-23	LR-27	LR-31	L-23	L-27	LR-23	LR-27	LR-31	L-23	L-27	LR-23	LR-27	LR-31
4	4	4	2	0	0	4	4	2	2	0	4	4	2	2	0
5	8	4	2	0	0	8	4	2	2	0	8	4	2	2	0
6	10	2	2	2	0	8	4	2	2	2	6	8	2	2	2
7	10	4	4	2	0	10	6	2	2	2	8	8	2	2	2
8	12	4	2	2	0	12	6	2	4	2	10	8	2	4	2
9	14	4	4	2	0	14	6	2	4	2	12	8	2	4	2
10	16	4	4	2	0	14	6	4	4	2	14	8	4	4	2

QUANTITIES OF RAIL BOUND HOOK TWIN TIE PLATES

FROG NO.	TYPE I RAILS					TYPE II RAILS					TYPE III RAILS					PLAN NO.
	L-23	L-27	LR-23	LR-27	LR-31	L-23	L-27	LR-23	LR-27	LR-31	L-23	L-27	LR-23	LR-27	LR-31	
4	4	4	2	0	0	2	6	2	2	0	2	6	2	2	0	611-55
5	6	4	4	0	0	4	6	4	2	0	4	6	2	2	0	611-55
6	10	2	2	2	0	4	8	2	2	2	4	10	2	2	2	612-55
7	12	4	2	2	0	8	8	2	2	2	10	6	2	2	2	612-55
8	12	4	2	2	0	8	10	2	4	2	8	10	2	4	2	612-55
9	16	4	2	2	0	10	10	2	4	2	10	10	2	4	2	613-55
10	16	4	4	2	0	12	8	4	4	2	12	10	4	4	2	613-55
11	18	6	4	2	0	14	10	4	2	2	12	14	4	2	4	613-55
12	18	8	4	4	0	14	12	4	4	2	12	14	4	4	4	614-55
14	22	8	4	4	0	16	14	4	6	2	14	16	4	6	4	614-55
15	24	8	4	4	0	16	18	4	6	2	16	18	4	6	4	614-55
16	26	8	6	2	0	16	18	6	6	2	16	20	6	6	4	615-55
18	26	12	6	4	0	18	22	6	8	2	18	22	6	8	4	615-55
20	32	10	6	6	0	20	24	6	8	4	16	28	6	8	6	615-55

QUANTITIES OF SOLID MANGANESE HOOK TWIN TIE PLATES

FROG NO.	TYPE I RAILS					TYPE II RAILS					TYPE III RAILS				
	L-23	L-27	LR-23	LR-27	LR-31	L-23	L-27	LR-23	LR-27	LR-31	L-23	L-27	LR-23	LR-27	LR-31
4	2	4	0	0	0	2	4	0	0	0	2	2	0	0	0
5	4	2	0	2	0	4	2	0	2	0	4	2	0	2	0
6	4	2	0	2	0	4	2	0	2	2	4	2	0	2	2
7	4	4	2	2	0	4	4	2	2	2	4	2	0	2	2
8	6	2	2	4	0	6	4	0	4	2	4	4	0	4	2
9	8	2	2	4	0	6	4	2	4	2	4	4	0	4	2
10	8	2	4	4	0	6	4	2	4	2	6	4	2	4	2

FROG NO.	TYPE I RAILS				TYPE II RAILS				TYPE III RAILS			
	H-23	H-27	H-31	H-35	H-23	H-27	H-31	H-35	H-23	H-27	H-31	H-35
4	4	2	0	0	4	2	0	0	4	2	0	2
5	4	2	0	2	4	2	0	2	4	2	0	2
6	4	2	0	2	4	2	0	2	4	2	0	2
7	2	4	0	2	2	4	0	2	4	4	2	2
8	2	4	2	0	4	4	2	0	4	4	2	2
9	2	4	2	0	4	6	0	2	6	6	2	0
10	4	6	0	0	6	6	2	0	6	6	2	0

*Formerly 641-55



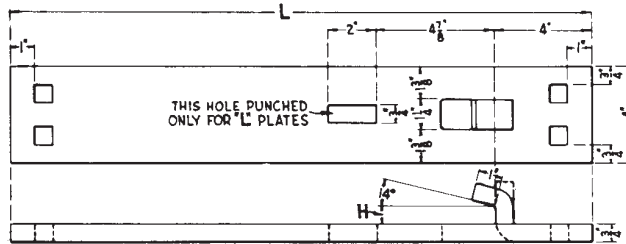
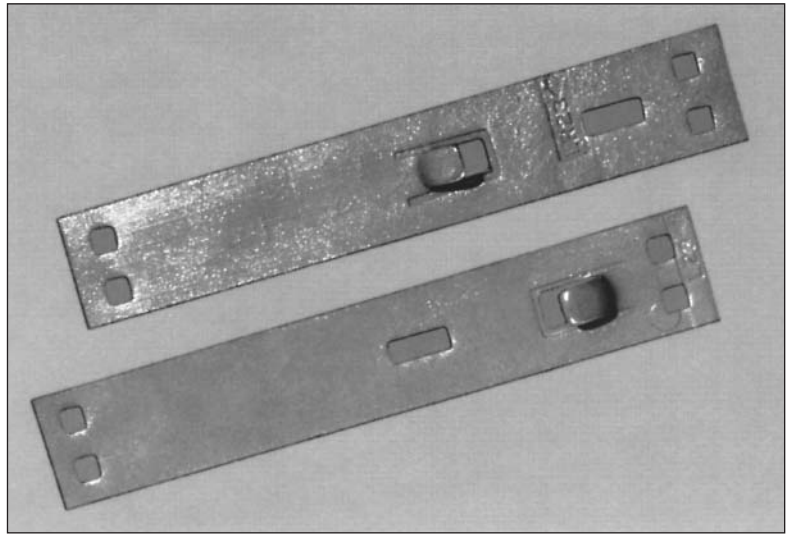
Hook Twin Tie Plates

Unitrac hook twin tie plates are made in accordance with AREA Plan. 241 for use under frogs, and beyond the heel where standard tie plates cannot be placed without cutting. Quantities to be furnished are listed in this catalog for various units illustrated. Dimensions of several types of rails are stated below.

TYPE I Rail - Rails having base up to 5 3/16" and head 2 9/16" inclusive

TYPE II Rail - Rails having base up to 5 1/2" and head 2 3/4" inclusive

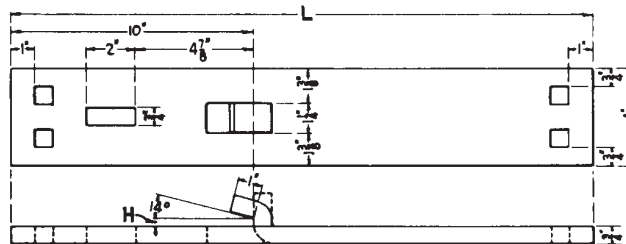
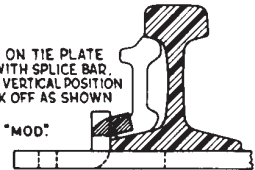
TYPE III Rail - Rails having base up to 6" and head 3" inclusive



MARK	L	H
L 23	23'	9 1/16"
L 27	27'	9 1/16"
L 31	31'	9 1/16"
H 23	23'	15 1/16"
H 27	27'	15 1/16"
H 31	31'	15 1/16"
H 35	35'	15 1/16"

ALL SPIKE HOLES 3/4" SQUARE EXCEPT WHERE OTHERWISE SHOWN.

WHERE HOOK ON TIE PLATE INTERFERES WITH SPLICE BAR, BEND HOOK TO VERTICAL POSITION OR BURN HOOK OFF AS SHOWN BY SHADING. DESIGNATED "MOD."



MARK	L	H
LR 23	23'	9 1/16"
LR 27	27'	9 1/16"
LR 31	31'	9 1/16"

