

# Switch Plates

A Plate is a section of rolled steel that supports a rail or other track structure. Plates are sized to conform to AREA designs, unless specified otherwise.

## Gage Plate

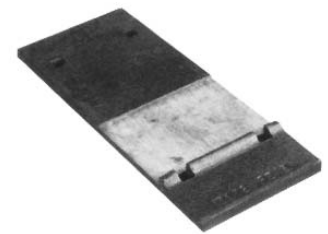
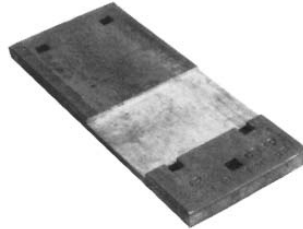
Maintains gage at the point of switch. Available either insulated or non-insulated.



## Shoulder Slide Plate

Holds the stock rail in position and allows the switch point to slide as required.

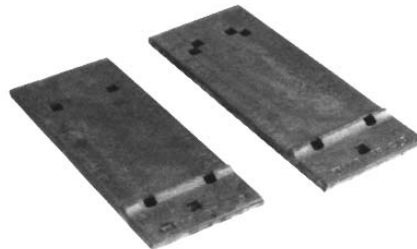
## Slide Plate with Milled Pocket for Shoulder



## Slide Plate with Milled Pocket and Rolled Shoulder

## Shoulder Heel Plate

Fits under the heel block.

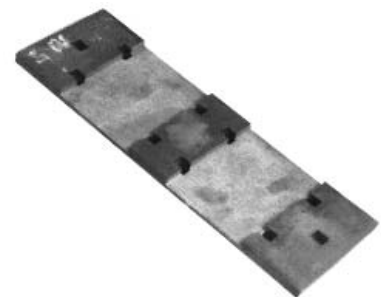


## Standard Plates for single-tie installation

## Hook-Twin Tie Plate

Used in graduated-riser applications beyond the heel of a switch. Fits all switch lengths, rail sections, and turnouts.

Most economical plate to use beyond the heel of a switch. Available for quick delivery.



## Turnout Pocket Plate

Used in uniform-riser applications beyond the heel of a switch. Assists in maintaining rail gage. Must be manufactured for specific switch length, rail section and turnout alignment.

